

## ASTM Solvent Distillation Apparatus

The sample evaporated and condensed under controlled conditions and observations are made of the temperature at various percentage are recovered.

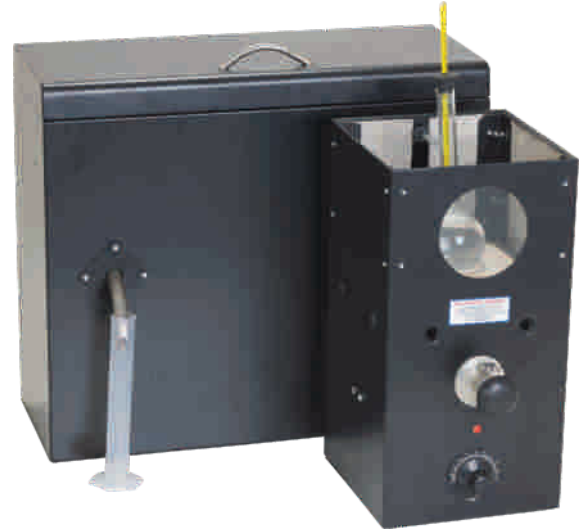
Electrically operated single test unit supplied with water bath, measuring cylinder, round bottom flask and Thermometer 10 °C to 360 °C

**Standard : IS 1448 (P-18) IP123 ASTM D 86**

**Accessories :**

- Thermometer
- Flask as per IP Standards
- Heating Coil
- Ceramic Board with hole (Asbestos plate)
- Measuring cylinders 100 ml
- Silicon cork

Ref.: 778



## Test Sieves

The Frame is made out of Brass and without any joint in it. Uniform fabrication of test sieves permit easy and smooth-nesting on each others.

Test sieves is the mesh should be flat, uniform and with permanent tension round the whole circumference.

Brass Frame with S.S. wire mesh diameter 8"

Mesh ( B.S.S 410 - 1969 )	Aperture Micron	Mesh ( B.S.S 410 - 1969 )	Aperture Micron
4	4750	72	210
5	3350	85	180
6	2800	100	150
7	2400	120	125
8	2000	150	106
10	1680	170	90
12	1400	200	75
14	1200	240	63
16	1000	300	53
18	850	350	45
22	710	400	38
25	600	500	25
30	500	600	20
36	425	700	15
44	355	800	10
52	300	1000	5
60	250		



Ref.: 660